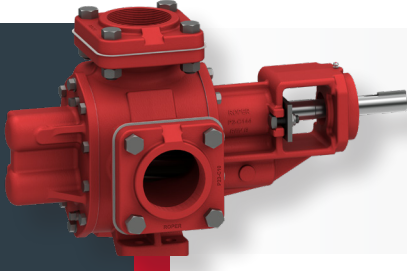




Family of Positive Displacement Pumps



3600



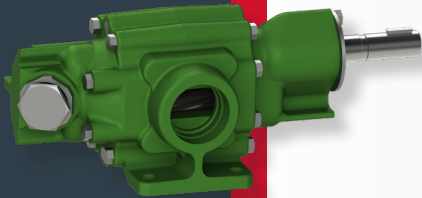
Applications

- Mix, circulate, and transfer viscous liquids
- Gasoline, asphalt, molasses
- Ink, roofing compounds, oils

Features

- Precise tolerances for maximum efficiency
- Direct drive or built-on gear reducers
- Bi-directional rotation

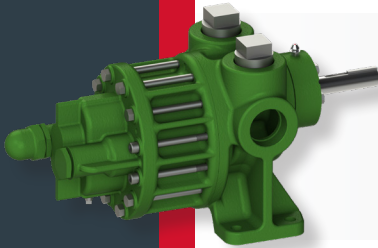
A



- Pressure lubrication
- Hydraulic service
- General transfer applications

- Operates at motor speeds
- Bi-directional rotation
- Close coupled capability

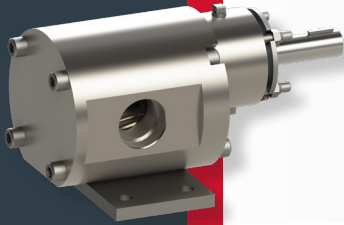
F



- Hydraulic power for lifts, machine actuation, fuel burners, and blenders
- General transfer of oil and petroleum fluids

- 2 inlet ports, 2 outlet ports allow multiple piping arrangements (except F150 - F300)
- High Pressure Range
- Maintain pump without pipe removal

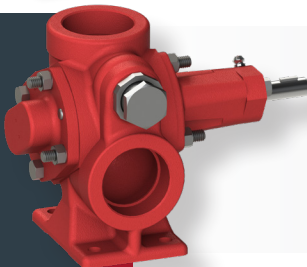
ROC



- Chemical processing
- Pharmaceutical industry
- Injection or transfer of acids & solvents

- Stainless steel construction
- Bi-directional rotation
- Mag-drive, sealless option (X5-03 only)

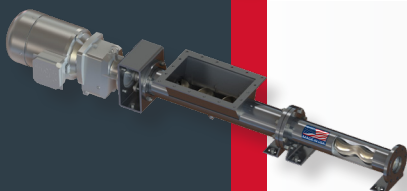
2835



- Roofing Compounds
- Molasses
- Feed Supplements

- Operates at standard motor speeds
- Large ports allow easier fluid entry
- Built-in relief valve

PC



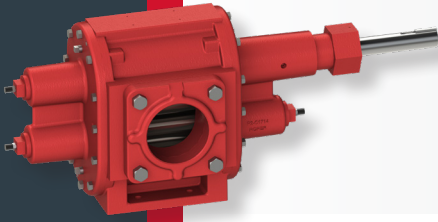
- Viscous, abrasive and solids-containing liquids
- Transfer of wastewater sludge, polymers, grouts, paints and adhesives

- Pulsation free pumping
- High suction lift capabilities
- Ideal for shear sensitive liquids
- XERIC metal stator for tough applications



Family of Positive Displacement Pumps

5600



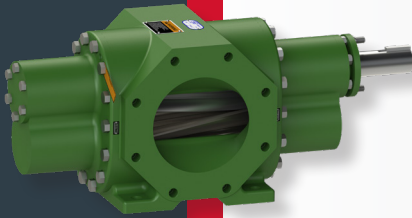
Applications

- Hydroseeding
- Grouting, seal coating, oil and sand
- Wastewater, waste oil, sludge, slurries
- Brine, paper pulp, fertilizer feeds

Features

- Rubber covered gears
- Bi-directional rotation
- Abrasive applications; up to pea size particles

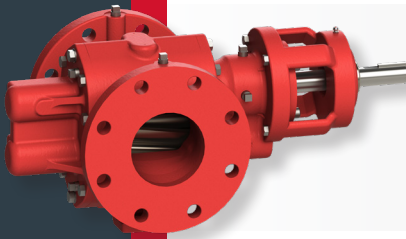
Bulk



- Fuels, solvents, petro chemicals
- Residual fuel oils, molasses, resins
- Tankers, barges, process plants, refineries

- Large ports (6" and 8"available) allow more efficient transfer of fluids
- Through port design allows for lower inlet and outlet losses

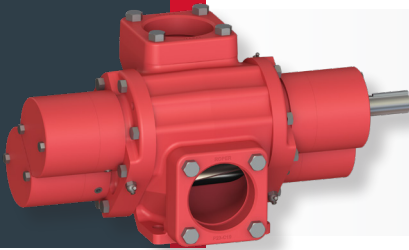
Z



- Industrial applications requiring a special mechanical seal

- ANSI Flanges
- Many parts interchangeable with 3600 Series
- Direct drive or built-on gear reducers
- Bi-directional rotation

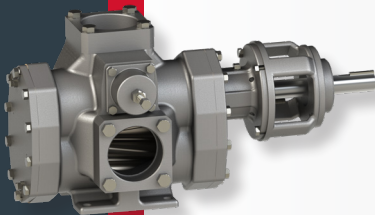
3800



- Oil fields including light & heavy crude oil
- Kerosene mixtures, condensates and hot oils

- Sealed ball bearings
- Quadruple grease purged lip seals
- Helical gears for quiet operation
- Bi-directional rotation

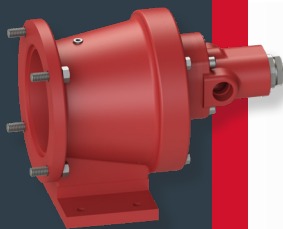
9622



- Chemical and transport applications
- Corrosive liquid transfer

- 316SS Housing
- 17-4 PH SST Gears / Shafts
- Built-in Relief Valve

V



- Hazardous liquid transfer
- "Zero leakage" applications due to environmental concerns
- Chemical and petroleum applications

- Mag-drive, seal-less design eliminates leakage, seal repair costs, and down time
- C-face mount eliminates misalignment
- Bi-directional rotation and self-priming*

